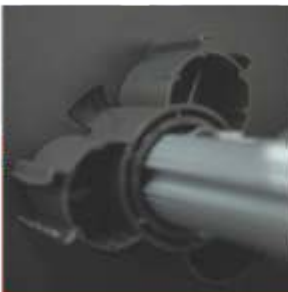


T10 / T20 Label Rewinder Family

The Rewinder Everyone Can Use

The T10 / T20 rewriter has an idler arm that can be positioned to rewind labels from either side of the printer.

Depending on the user's requirements, the rewriter can rewind "inside or outside" label rolls.



Modular core adaptor fits 1", 1.5" & 3" core sizes



Colored LED indicator provides rewriter operation status



Rewinding direction switch to rewind "inside or outside" label rolls



Easy assembly lock module for quickly and firmly label roll holding

Model	T10	T20
Paper width	4.72" (Max.)	7" (Max.)
Rewind Speed	12 IPS	
Label Roll	8" (Max.)	6" (Max.)
Core Roll	Coreless, 1" (25.2~25.6mm), 1.5"x2 (37.4~38.0mm & 40~40.6mm), 3" (76~76.6mm)	
Label Roll Weight	5 Kg	
Rewinding	Label Inside / Outside	
Switches	Rewind	
Motor	Hybrid Motor	
Power	100~240VAC 24W, 24V Adapter	
Environment	Operating Temp.: 41°F to 104°F(5°C to 40°C) Storage Temp.: -4°F to 122°F(-20°C to 60°C)	
Humidity	10-85% (non-condensing RH)	
Size (H*W*D)	303mm*180mm*349mm	303mm*180mm*394mm
Agency Approvals	CE, FCC Class A	
Weight	5 Kg (11 lb)	

* Specifications are subject to change without notice. All company and/or product names are trademarks and/or registered trademarks of their respective owners.